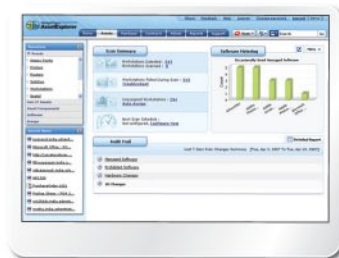
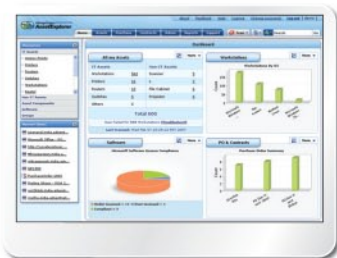


Don't end up like Nathan Natshure.  
Get your facts right with AssetExplorer

# ManageEngine AssetExplorer

*Complete Asset Management Software*

- IT and Non-IT asset Management
- Asset Life Cycle Management
- Hardware and Software Inventory
- Asset Configuration Baseline
- Software License Management
- Software Compliance Reports
- Audit History
- Contract Management
- Purchase Management
- Comprehensive built-in and Custom Reports



# Features

## One Place to Manage IT and non-IT assets

Get a single view of your IT and non-IT assets. AssetExplorer automatically discovers all IT assets such as Workstations, Printers, routers, switches and Access Points. You can key-in Non-IT assets such as Desk Phones, Chairs and Projectors or import asset details in .xls or csv format. The integrated view helps you track and manage assets efficiently.

## Manage Asset Life Cycle

Track the complete asset life cycle from the point of purchase till it is disposed. AssetExplorer tracks complete ownership history along with every change in the asset with its related cost. The complete asset life cycle management gives you a detailed view of the total cost of ownership, helping you make informed decision for future purchase.

## Hardware and Software Inventory

AssetExplorer collects detailed hardware and software inventory of all the workstations in your IT environment. Asset Managers can get every detail required (such as RAM, Processors, Hard drive, attached keyboard and mouse) from any workstation. The comprehensive reports on the hardware and software inventory distribution help Asset Managers to plan upgrades, purchases and audits

## Configuration Baseline with Asset Groups

Group Assets based on the workstation configurations say, workstations that are below 512 MB RAM and more than 1 GB RAM , workstations with Pentium 4 processors and Centrino Duo processors etc. These dynamic groups give Asset Managers a clear picture of workstation differences on configuration baseline. Asset Managers can make sure that the minimal configuration baseline is in place. AssetExplorer also helps you pick specific assets and create a static group. The static group would be ideal when you need to group different assets based on the service you offers to users. Eg: You can group assets such as EPABX System, Mail servers, Fax machine as Communications Channel Group..

## Software License Management

AssetExplorer scans your network and automatically discovers all the software available in each workstation. It automatically picks up Microsoft OS and MS Office license keys as well. AssetExplorer helps you classify the discovered software as Manage (purchased) software, Freeware, Open source, Shareware, Prohibited and Excluded. It helps you allocate and manage software license keys across the enterprise.

## Ensure Continuous Software Compliance

AssetExplorer helps you manage your purchased software licenses versus actually installed software. It alerts Asset Managers when purchased licenses exceed the actual number of installations and provides comprehensive reports. Once you have ensured software compliance, AssetExplorer alerts when someone tries to violate it. Software Violation alerts helps you take immediate action and ensure compliance on an on-going basis.

## Software Usage Tracking

AssetExplorer helps you track software usage in your IT environment. It classifies software as Frequently Used, Occasionally Used and Rarely Used Software. Asset Managers can take informed decisions while purchasing or renewing licensed software.

## Track Everything That Ever Happened on the network

AssetExplorer's Audit Trail helps you keep a tab on important changes such as software installations, hardware and OS changes. Detailed audit reports are generated with changes based criteria such as workstations and timelines, thereby, you will be able zero-in and track every single change that ever happened.

## Purchase Management

AssetExplorer offers a complete Purchase Order cycle with approvals. It helps you manage multiple vendors and vendor catalogs with product, product types and price. It helps you quickly create PO's with Organization name, Billing address, shipping address, tax rates etc. It helps you streamline your purchases by analyzing purchasing trends to leverage on negotiations with vendors.

## Contract Management

AssetExplorer helps you effectively manage contracts such as annual maintenance and support contracts with different vendors. Asset Managers can associate multiple assets with a contract and attach terms and conditions related to the contract. It keeps a check on the expiry date and alerts when it is time for renewal. Detailed reports based on contracts such as, contracts by maximum spend and contracts by vendors help you negotiate better rates for new ventures.